



**CIGRE SC B5 2025 Osaka Colloquium**

# **GUIDE BOOK**

**30th June - 6th July 2025**

**Osaka International Convention Center**



# Contents

|           |                                 |           |
|-----------|---------------------------------|-----------|
| <b>1</b>  | <b>Welcome message</b>          | <b>1</b>  |
| <b>2</b>  | <b>Committee Members</b>        | <b>2</b>  |
| <b>3</b>  | <b>Conference Venue</b>         | <b>3</b>  |
| <b>4</b>  | <b>Program</b>                  | <b>7</b>  |
| <b>5</b>  | <b>Poster Sessions</b>          | <b>9</b>  |
| <b>6</b>  | <b>Opening Ceremony</b>         | <b>15</b> |
| <b>7</b>  | <b>Tutorial</b>                 | <b>17</b> |
| <b>8</b>  | <b>Group Discussion Meeting</b> | <b>19</b> |
| <b>9</b>  | <b>Exhibition</b>               | <b>23</b> |
| <b>10</b> | <b>Welcome Party</b>            | <b>27</b> |
| <b>11</b> | <b>Gala Diner</b>               | <b>28</b> |
| <b>12</b> | <b>Technical Tour</b>           | <b>29</b> |

The background of the slide features a close-up of a young child's face, looking upwards with a curious expression. The child is holding a white, cylindrical object, possibly a tool or a component, in their hand. The image is overlaid with several red diagonal stripes, creating a dynamic and modern aesthetic. The Hitachi logo is positioned in the top left corner.

# HITACHI

# Digital for all.

Harnessing the power of  
digital innovation for a  
sustainable energy transition.

Hitachi, Ltd. Digital Systems & Services

CIGRE SC B5 2025 Osaka Colloquium All rights reserved.





Times change.  
Energy sources as well.



But the need for stable  
power supply is *constant*.

As humanity moves toward the achievement of carbon neutrality, proactive initiatives that go beyond simple declarations are needed more than ever. Utilizing independently developed advanced information & communications technologies (ICT) for power grid modernization accumulated over many years, Mitsubishi Electric provides cutting edge solutions that enable the stable supply of renewable energy in everyday life. Not only this, but to preserve the richness of Earth for future generations, we will continue to contribute to the creation of tomorrow's energy resources as well.





Deliver Power for ordinary daily life of all,  
today and tomorrow



**Kansai Transmission and Distribution**

# Welcome Message

## Kazuhiro Enomoto

CIGRE SC B5 chair of Japanese National Committee

Executive officer, Renewable Energy Division,

Kansai Electric Power Co., Inc.

Chair, CIGRE 2025 Osaka Colloquium Organizing Committee



榎本 和宏

We are pleased to announce that the CIGRE SC-B5 Colloquium will be held at the Osaka International Convention Center (Osaka, Japan) from June 30 to July 6, 2025. This colloquium is organized by the Study Committee (SC) of CIGRE, an international organization, and is held every two years. The colloquium is a meeting for the presentation of CIGRE papers.

The colloquium is organized under the general theme of "The rapid development of communication and digital technologies has brought about the transition from the conventional hard-wired systems to IEC 61850 based systems in digital substations." It focuses on the following preferential subjects:

PS1 : IEC 61850 based Interoperability of IEDs of different manufacturers and technologies integrated in one PACS

PS2 : PACS Life Cycle Performance and Longevity

PS3 : Sharing of best practices on revised principles enabled by modern protection IEDs

Over the course of three days, numerous papers will be presented in one tutorial and three sessions. Social programs including receptions and a technical tour related to Expo 2025 Osaka, Kansai are also planned to contribute to international exchange.

The CIGRE 2025 Osaka Colloquium will provide opportunities to deepen academic exchange and contribute to the development of power technology worldwide. We aim to share solutions to challenges faced in different countries and promote engagement among participants.

Welcome to the CIGRE 2025 Osaka Colloquium! We hope you enjoy the event.

# Committee Members

## Colloquium Organizing Committee



### **Mr. Kazuhiro Enomoto**

Chair

Osaka Colloquium Organizing Committee,

**CIGRE SC B5** of Japanese National Committee

Kansai Electric Power Co., Inc.

## CIGRE SC B5



### **Dr. Volker Leitloff**

Chair

**CIGRE SC B5**

RTE (Réseau de Transport d'Électricité)



### **Mr. Peter Bishop**

Secretary

**CIGRE SC B5**

Transpower



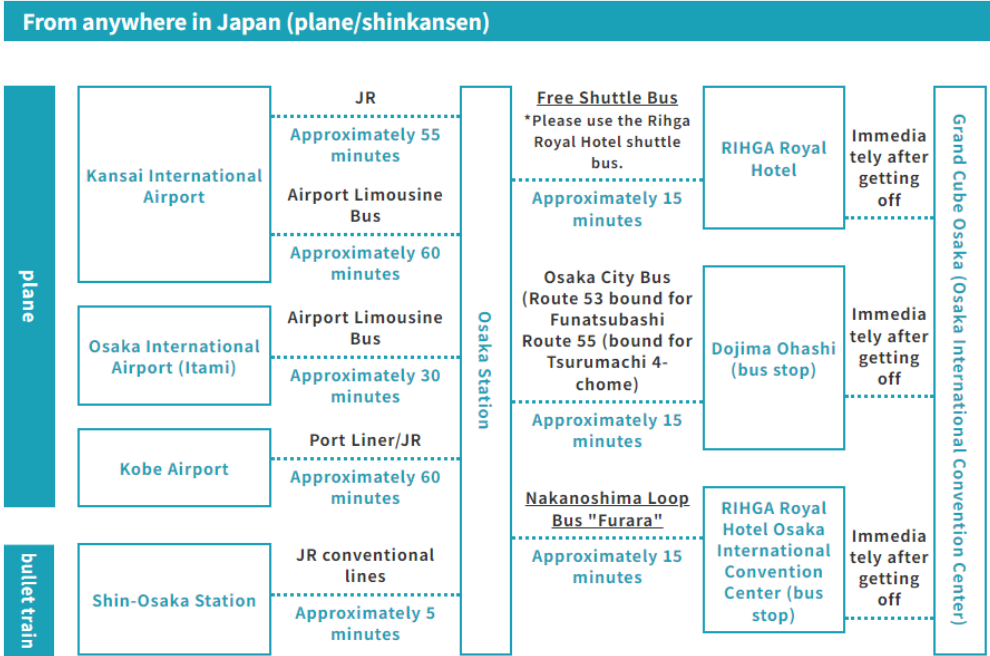
# Conference Venue

## Access to Osaka International Convention Center (Grand Cube Osaka)

From overseas to Osaka, Kansai International Airport (KIX) or Osaka International Airport (ITM) are convenient to visit.

### From Kansai International Airport to Osaka Station

- Take the JR Limited Express Haruka to Tennoji Station (approx. 30-50 min.). Transfer to the JR Osaka Loop Line to Osaka Station (approx. 10 min.).
- Take the Nankai Electric Railway Limited Express Rapid to Namba Station (approx. 35-45 min.). Transfer to the Midosuji Subway Line to Umeda Station (Osaka Station) (approx. 5 min.).
- Take the Limousine Bus to Osaka Station (approx. 1 hour). Travel time may vary due to traffic.



# From Osaka Station to Osaka International Convention Center

- Free shuttle bus available from Osaka Station.  
(You can use the shuttle bus of the Rihga Royal Hotel)
- About 10 minutes by taxi from Osaka Station.

## From around Osaka (Train/Bus)

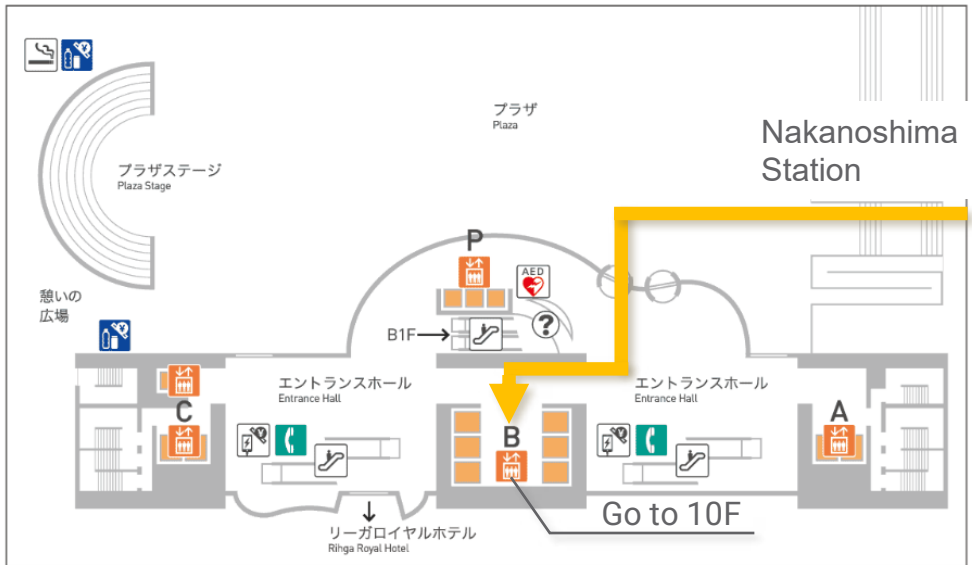
|                  |                                   |  |  |  |
|------------------|-----------------------------------|--|--|--|
| Free Shuttle Bus | JR Osaka Station                  | <u>Free Shuttle Bus</u><br>*Please use the Rihga Royal Hotel shuttle bus.<br>Approximately 15 minutes                  | RIHGA Royal Hotel  | Immediately after getting off                            |
| train            | Keihan Railway Nakanoshima Line   | Nakanoshima Station (Osaka International Convention Center) (Exit 2)   | soon   | Grand Cube Osaka (Osaka International Convention Center) |
|                  | JR Osaka Loop Line                | Fukushima Station  | Approximately 15 minutes on foot                                   |  |
|                  | JR Tozai Line                     | Shin-Fukushima Station (Exit 3)  | Approximately 10 minutes on foot                                   |  |
|                  | Hanshin Main Line                 | Fukushima Station (Exit 3)   | Approximately 10 minutes on foot                                   |  |
|                  | Osaka Metro                       | Awaza (Chuo Line Exit 1)<br>Sennichimae Line Exit 9)   | Approximately 15 minutes on foot                                   |  |
| Bus              | On-Demand Bus Kita/Fukushima Area | <u>Osaka Metro On-Demand Bus</u><br>Approximately 15 minutes   | Dojima Bridge 70・30 (bus stop)                                     | Immediately after getting off                            |
|                  | JR Osaka Station Bus Terminal     | Osaka City Bus (Route 53 bound for Funatsubashi<br>Route 55 (bound for Tsurumachi 4-chome)<br>Approximately 15 minutes | Dojima Ohashi (bus stop)   | Immediately after getting off                            |
|                  | JR Osaka Station West Exit        | <u>Nakanoshima Loop Bus "Furara"</u><br>Approximately 15 minutes   | RIHGA Royal Hotel Osaka International Convention Center (bus stop) | Immediately after getting off                            |

Access map  
(area map)



# Conference Venue

## Osaka International Convention Center (Grand Cube Osaka) Conference Building



Nakanoshima  
Station

Entrance Hall



① Reception Desk

(6/30 13:00~7/1)

② Reception Desk

(7/2~7/4)

③ Poster Sessions

(1004+1005)

④ OP Ceremony

Tutorial

Group Discussion Meeting

(1003)

⑤ Exhibition Hall

(1008+1009)

⑥ Lunch & Break

(1001+1002 : 7/2~7/4)

10F



# Program

| Date          | Time        | Event                              | Place  |
|---------------|-------------|------------------------------------|--|
| June 30 (Mon) | 9:00-17:00  | WG Meetings<br>(B5 86,88)          | Room 1005 (B5 86)<br>Room 1006 (B5 88)   |
| July 1 (Tue)  | 9:00-17:00  | WG Meetings<br>(B5 86,83,81,87)    | Room 1005 (B5 86)<br>Room 1007 (B5 83)<br>Room 1101 (B5 81)<br>Room 1102 (B5 87) |
|               | 9:00-12:00  | WG Meetings<br>(B5 65)             | Room 1006 (B5 65)  |
|               | 15:00-19:00 | WG Meetings<br>(B5 74)             | Room 1006 (B5 74)  |
| July 2 (Wed)  | 9:00-18:00  | WG Meetings<br>(B5 63)             | Room 1006 (B5 63)  |
|               | 9:00-12:00  | SAG/TAG meeting                    | Room 1007  |
|               | 14:00-17:30 | Poster Sessions                    | Room 1004,1005   |
|               | 18:00-20:00 | Welcome Party                      | Restaurant GRANDE TOQUE<br>(12th floor)  |
| July 3 (Thu)  | 9:30-10:20  | Opening Ceremony                   | Room 1003  |
|               | 10:30-13:00 | Tutorial                           | Room 1003  |
|               | 14:00-17:30 | Group Discussion<br>Meeting<br>PS2 | Room 1003  |
| July 4 (Fri)  | 9:00-12:30  | Group Discussion<br>Meeting<br>PS1 | Room 1003  |
|               | 13:30-17:00 | Group Discussion<br>Meeting<br>PS3 | Room 1003  |
|               | 18:00-20:00 | Gala Dinner                        | Room "Sanraku,"<br>Tower Wing 2nd floor,<br>Rihga Royal Hotel Osaka              |
| July 5 (Sat)  | 8:30-17:00  | B5 Meeting                         | Room 801,802   |
| July 6 (Sun)  |             | Technical Tour                     | EXPO 2025 Osaka, Kansai,   |

# Chubu Electric Power Grid

We operate T&D grid and deliver electricity to people's lives.

To fulfill our responsibilities  
and meet society's expectations



## Power Electronics as a force for social good.



Contributing to the creation of a sustainable society

 **Fuji Electric**  
*Innovating Energy Technology*



# Poster Sessions

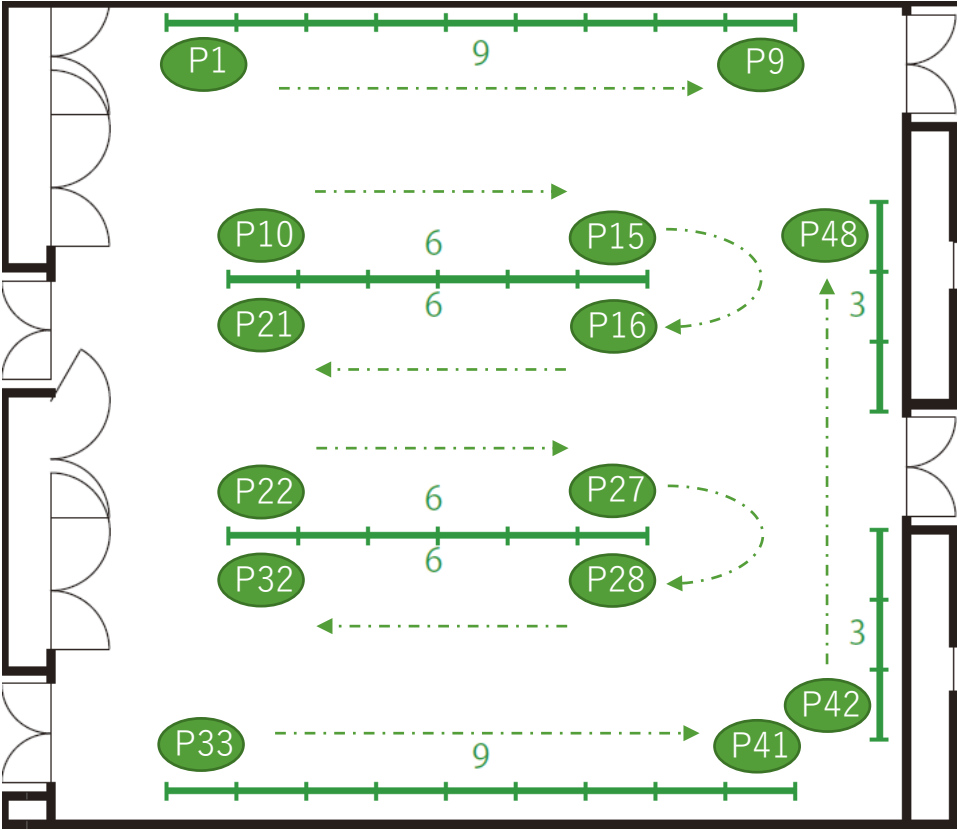
## Date & Time

2 July 14:00 – 15:30 1st Session  
16:00 – 17:30 2nd Session

## Venue

Room 1004+1005

## Location



# Poster Sessions

## PS1

IEC 61850 based Interoperability of IEDs of different manufacturers and technologies integrated in one PACS

| posterID | Session     | Title  | Author (Presenting author)   | Location |
|----------|-------------|--|--|----------|
| 1100     | 2nd Session | IEC 61850-based off-site engineering and validation methodology for protection, automation, and control systems            | Silva Melo, André Felipe; Ribeiro, Uire; Granadino, Alessandro; Silva, Adilson; Rossero-Morillo, Veronica; GONZALEZ-LONGATT, Francisco                                     | P1       |
| 1110     | 2nd Session | Itaipu experience in the evaluation of performance and interoperability of protection based on process bus                 | Pesente, Jonas; Vargas, Esteban; Nizer, Leonardo; Valoto, Leandro  | P2       |
| 1113     | 1st Session | Interoperability Aspects from Rte's R#SPACE Project related to the Application of IEC 61850 Requirements                   | Leitloff, Volker; Merley, Maud; Dubar, Dominique; Ghafari, Christophe; Bedourian, Martial; Fontenay, David; Malosse, Romain  | P3       |
| 1114     | 2nd Session | Standards based engineering and its impact on interoperability of IEC 61850 based protection and control systems           | Apostolov, Alexander   | P4       |
| 1117     | 1st Session | Development of Gateway for IEC 61850 Digital Substation  | NISHI, Shintaro; JOZEN, Daichi; OKAHISA, Atsushi; TAKESHITA, Yosuke  | P5       |
| 1120     | 2nd Session | Research on the improvement of operation and maintenance efficiency of relay protection based on digital design technology | LV, Hang; GONG, Xiao; DING, Jie; LI, Li  | P6       |
| 1121     | 1st Session | Experiences in Interoperability Testing of IEDs Focusing on Time Synchronization Behavior                                  | Junior, Paulo Sergio Pereira; Bernardino, Rodolfo Cabral; Salge, Gustavo Silva; Martins, Cristiano Moreira; Lourenço, Gustavo Espinha; Pereira, Paulo Sergio               | P7       |
| 1128     | 2nd Session | Multivendor Interoperability Tests for Process Bus in Japan based on International Standards                               | KAWASAKI, Kota; DEGUCHI, Masayuki; OKAI, Makoto; ASAI, Takeshi; SHIMOFUJI, Keigo; SHIROI, Shotaro; KATAYANAGI, Yasutaka; IWAMARU, Akifumi; NAGATA, Keiichi; ISHIGAMI, Yuta | P8       |
| 1129     | 1st Session | Development of IEC 61850 compliant multi-functional fault recorder   | SUZUKI, Reiya; ISHIKAWA, Masayuki; SHINOZAKI, Masafumi; UEDA, Junichi; INOMATA, Yoshiharu; KATAOKA, Tetsuya; YAMAMOTO, Harumi; ONISHI, Hiroyuki                            | P9       |
| 1130     | 2nd Session | IEC 61850 based Interoperability : CYG SUNRI's exploration in Intelligent Substation                                       | Luo, Laifeng; Yu, Weiguo; Li, Jin; Gao, Xiaoquan   | P10      |

# Poster Sessions

## PS1

IEC 61850 based Interoperability of IEDs of different manufacturers and technologies integrated in one PACS

| posterID | Session     | Title   | Author (Presenting author)  | Location |
|----------|-------------|---|---|----------|
| 1138     | 2nd Session | INTEROPERABILITY TESTS IN A MULTIVENDOR PLATFORM OF BUSBAR PROTECTION USING IEC 61850 PROCESS BUS APPLIED BY CIGRE WORKING GROUP B5.74. | LELLYS, DENYS; FLORES, Pablo; Melo, Andre; Goblirsch, Rainer; Ferrero, Iñigo; Redondo, Cesar; Faramawy, Hamdy; Dierks, Alex; Toledo, Rafael; vijayaraghavan, sindhuja; aguilar, Carlos  | P11      |
| 1142     | 2nd Session | Enhanced PACS Network with Intent-Based Networking and IEC 61850  | Lisboa, Guilhermme; Haegdorens, Davy; Kehrler, Stephan  | P12      |
| 1143     | 1st Session | IEC 61850 based Interoperability of IEDs of different manufacturers and technologies integrated in one PACS                             | Lisboa, Guilhermme; Normanton, Guilherme; Vasquez, Arnau; Jorge, João   | P13      |
| 1146     | 2nd Session | Top-Down Engineering Process Application on Digital Substation Protection, Automation and Control System Deployment                     | Alexandrino, Mateus; Azevedo, Ana Gabriela da Silva de; Lunardi, Mateus Cruz; Higashi, Silvia Sawada Simões Costa; Pietta, Vitalcir; Ferreira, Adriano de Oliveira; Oleskowicz, Bruno Alexandre; Moraes Neto, Carlos de Souza; Scheffer, Rafael Bonet | P14      |
| 1149     | 1st Session | Best practices for IEC 61850 tools to achieve interoperability and efficiency   | Harispuu, Cédric; Sanchez, Jose; Schneider, Sebastian   | P15      |
| 1157     | 1st Session | Simplifying the configuration process for IEC61850-based systems through generative AI technology                                       | Fernandes, Gabriel; Pires, Adriano; León, Héctor; Lemos, Heverton   | P16      |
| 1159     | 1st Session | A proposal for standardisation of GOOSE and Sampled Value messages configuration  | Kuniyoshi Pacheco, Rodrigo Kenzo; Hernandes, Romulo Augusto   | P17      |



# Poster Sessions

## PS2

### PACS Life Cycle Performance and Longevity

| posterID | Session     | Title  | Author (Presenting author)   | Location |
|----------|-------------|--|--|----------|
| 1111     | 1st Session | Development of Integrated System Emergency Preventive Controller for 500kV Systems                                     | Sato, Masami; Ito, Shu; Oeda, Yoshikazu; Yano, Genki; Endo, Takuya; Inuzuka, Naoya; Ishii, Takumi; Yamazaki, Tomohide; Yoshimoto, Saori; Yamada, Fumio | P18      |
| 1125     | 1st Session | Application of updating Total Measurement System using intermediate distribution frame retrofit modification           | Tado, Katsuyuki  | P19      |
| 1126     | 2nd Session | Evolution of the System Stabilization Technology Supporting the Stable Operation of the Kansai Grid                    | KURUSHIMA, Tomohiro; ARAMAKI, Takuo; TAKESHITA, Yosuke; JOZEN, Daichi; TAMURA, Tsubasa   | P20      |
| 1127     | 1st Session | Status and future direction of digital relay operation and maintenance in Japan  | Deguchi, Keita; Ueda, Yoshinobu; Okamura, Kenji; Sato, Ryohei; Miyagi, Takashi; Ichinose, Ken; Fukuya, Yoshifumi                                       | P21      |
| 1131     | 1st Session | Unit-replacement method of Protection Relay  | SHIMOFUJI, KEIGO; TAKEMOTO, YOSHITAKA; NISHIMURA, KENTARO; HYODO, KAZUYUKI   | P22      |
| 1139     | 1st Session | Digitalization Progress and Approach for Full Digitalization of Distribution Substations in the Kansai Region of Japan | Kato, Ren; Kitamura, Haruka; Uemura, Saki; Ito, Masahiro; Itotani, Ryosuke; Yamamoto, Yuuma; Sugawara, Akinori; Taniizumi, Katsuya                     | P23      |
| 1144     | 2nd Session | Line Differential Protection over MPLS-TP: Guaranteed Reliability, Flexibility, and Longevity in PACS                  | Haegdorens, Davy; Sugiura, Hideaki; Lisboa, Guilhermme   | P24      |
| 1155     | 1st Session | Life Cycle Management Overview of Protection, Automation, and Control Systems for Drilling Vessel Projects             | Aviz, Carlos; Fernandes, Rafael; Dutra, Ricardo; Hafner, Angelo; Tavares, Carlos   | P25      |
| 1165     | 1st Session | Enhancing existing line differential relay operation reliability with hitless IP/MPLS multipath redundancy             | Chan, Hansen; Verhulst, Dominique  | P26      |

# Poster Sessions

## PS3

Sharing of best practices on revised principles enabled by modern protection IEDs

| posterID | Session     | Title   | Author (Presenting author)   | Location |
|----------|-------------|---|--|----------|
| 1107     | 1st Session | A Novel Short-circuit Detection Scheme for IBR-based MV(medium voltage) Microgrids                    | Uda, Satoshi; Kawasaki, Yoshinori; Ishikura, Sadayuki  | P27      |
| 1109     | 1st Session | Prototype and evaluation of a new Sampling Rate Interchange-MU compliant with IEC 61850/61869         | KAWAZOE, Ryuichi; KOJIMA, Kazuhiro; IWAMARU, Akifumi; SHIMIZU, Tetsuro; OMORI, Tomoo; OTANI, Tetsuo; AOKI, Mutsumi | P28      |
| 1112     | 2nd Session | Method of single-phase grounding protection for small resistance grounding system                     | Li, Yuqi; Zhu, Haobin; Xu, Guangfu   | P29      |
| 1115     | 1st Session | Cross differential protection applications in IEC 61850 based digital substations                     | Apostolov, Alexander   | P30      |
| 1116     | 2nd Session | Development of a 275kV Line Differential Protection IED with Distributed and Integrated Functionality | TAMURA, Tsubasa; JOZEN, Daichi; OKAHISA, Atsushi; TAKESHITA, Yosuke; NOSE, Yotaro; MORI, Takahiro                  | P31      |
| 1119     | 1st Session | Implementing IRAS that Contributing Blackout Prevention   | Yabuno, Naruhito; Izumi, Yuta; Adachi, Tomohiro; Kusaba, Kenichiro   | P32      |
| 1122     | 2nd Session | Cybersecurity Risks and Operational Impacts on Microgrids in Grid-Connected and Isolated Modes        | Carmo, Ubiratan  | P33      |
| 1123     | 1st Session | Development of a portable transfer trip device  | YAMAZAKI, NATSUMI; FUKUO, TOMOHIRO; YAMAUCHI, SEIYA; ONO, MASAYUKI   | P34      |
| 1124     | 2nd Session | Considerations for Using IEDs as Protection Relay Devices in Japan                                    | MIZUHARA, Satoshi; JOZEN, Daichi; TAKESHITA, Yosuke  | P35      |
| 1134     | 2nd Session | Impact of LPITs on Protection Algorithms  | Schulz, Lars Lukas; Dzienis, Cezary  | P36      |
| 1135     | 1st Session | Development of N-1 inter-trip scheme using IP transmission  | TANIGAWA, SHINJI; NAKATA, YASUYUKI; SAYAMA, HIROKI; KURUSHIMA, TOMOHIRO  | P37      |
| 1137     | 1st Session | Automatic Supervision for Trip Circuit in Process Bus System  | Okai, Makoto; Sonobe, Yasutaka; Miyoshi, Tetsuya; Lizhou, Cheng; Kojima, Kazuhiro                                  | P38      |
| 1141     | 1st Session | Development of Integrated Stability Control (ISC) system  | TAKAMATSU, Yuki; YAMAGUCHI, Ryo; HOSHINO, Tomohiro; KUSABA, Kenichiro  | P39      |
| 1145     | 1st Session | Double ended travelling wave fault location using unsynchronized data                                 | Blumschein, Joerg  | P40      |

# Poster Sessions

## PS3

Sharing of best practices on revised principles enabled by modern protection IEDs

| posterID | Session     | Title  | Author (Presenting author)   | Location |
|----------|-------------|--|--|----------|
| 1147     | 1st Session | Sensitive Turn-to-turn Fault Protection for Power Transformers Using Incremental Negative-Sequence Differential and Advanced Stabilising Criteria    | Mieske, Frank; Schneider, Sebastian; Rebizant, Waldemar; Solak, Krzysztof  | P41      |
| 1148     | 2nd Session | Best Practices for Optimizing Settings and Configuration Management of IEDs: Challenges and Applications Experiences                                 | Hernandez, Fabio; Guerrero, Christian; Gonzalez, Laura; Caicedo, Juan M; Guerra, Gerardo; Gil, Alejandro; Agudelo, Juan P. | P42      |
| 1151     | 1st Session | Line Differential Protection for Long-Distance Remote Assets using Passive Optical Sensing   | McKeeman, Iain; Hale, Elliot; Cadger, Fraser; Gordon, Neil; Blair, Steven  | P43      |
| 1152     | 2nd Session | Application of the directional ground-fault protection to detect turn-to-turn faults in an optimum protection scheme for high-voltage shunt reactors | Schneider, Sebastian; Mieske, Frank; Steynberg, Gustav; Damasceno, Jorge; Solak, Krzysztof                                 | P44      |
| 1154     | 2nd Session | Best maintenance practices adopted by Brazilian TSO considering modern IEDs  | Fernandes, Rafael; Dutra, Ricardo; Muratore, Juliana; Aviz, Carlos   | P45      |
| 1161     | 2nd Session | Evaluation of a line protection system with a series-compensation capacitor  | Kuniyoshi Pacheco, Rodrigo Kenzo; Fernandes Pinheiro, Felipe   | P46      |
| 1163     | 1st Session | Monitoring System for the Communication Network of Protection Systems in Digital Substations   | Oliveira, Denise Borges de; Alves, Tatiana Maria T. de S.; Siqueira, Iony Patriota de                                      | P47      |
| 1164     | 2nd Session | Case Study of a PCMS in a Real-World Power Network   | Hussein, Tarik Mehmet  | P48      |

# Opening Ceremony

## Date & Time

July 3rd (Thu.) 9:30 - 10:20

## Venue

Room 1003

## Program & Time Schedules

| Time       | Room 1003  |
|------------|--|
| 9:30- 9:35 | Opening Remark<br>Mr. Kazuhiro Enomoto,<br>Chair of SC B5 Japanese National Committee<br>Kansai Electric Power Co., Inc. |
| 9:35- 9:50 | Welcome Speech<br>Dr. Volker Leitloff,<br>Chair of CIGRE SC B5<br>RTE (Réseau de Transport d'Électricité),               |
| 9:35-10:20 | Keynote Speech<br>Mr. Takahiro Kase,<br>Toshiba Energy Systems & Solutions Corporation                                   |

POCKETALK

Pocketalk for  
Conference

# Keynote Speaker

## Mr. Takahiro Kase

Senior Manager

Grid Service Business Creation Department

Grid Solution Div.

Toshiba Energy Systems & Solutions Corporation



Takahiro Kase received the Bachelor of Engineering and Master of Engineering degrees in Electrical Engineering from Waseda University, Tokyo, Japan, in 1993 and 1995, respectively. Upon joining Toshiba Corporation in 1995, he has dedicated his career to the energy systems sector, with a particular focus on international protection and control business. He has also contributed to activities such as CIGRE SCB5, IEC TC57 and TC95. He is currently a director at IEEJ and serves as the Vice Chairman of IEEE PES Japan. Recently, he has been focusing on digital transformation in the transmission and distribution business.



# Tutorial

## Title

Protection and Automation Considerations During Power System Disturbances (SC B5)

## Date & Time

July 3rd (Thu) 10:30 - 13:00

## Venue

Room 1003

## Program & Time Schedules

| Time         | Topic   | Speaker  |
|--------------|---|--|
| 10:30 –10:40 | Introduction  | Mrs. Anita Oommen<br><br>ElectraNet (Pty) Ltd, Adelaide,<br>South Australia            |
| 10:40 –11:05 | Japan’s experience of RAS   | Mr. Toru Maeda<br><br>Mitsubishi Electric Corporation                                  |
| 11:05 –11:55 | Overview of protection performance and the impact of IBR during a recent blackout in Brazil, and the measures to mitigate this impact on the power grid | Ms. Denise Borges de Oliveira<br><br>National Operator of Brazilian Power System - ONS |
| 11:55 –12:20 | Protection and automation issues of islanded systems during system restoration  | Prof. Nirmal Nair<br><br>University of Auckland,<br>New Zealand                        |
| 12:20 –12:50 | Q&A Session   | Audience   |
| 12:50 –13:00 | Closing   | Mrs. Anita Oommen  |

**POCKETALK**

Pocketalk for  
**Conference**

# Tutorial

## Presenters

### Mrs. Anita Oommen

Anita Oommen has over 28 years of experience in the field of power system protection, having previously fulfilled various roles in the South African power utility, Eskom, including leading the development of standards and guidelines for protection and automation. She is presently involved in the standardization of engineering solutions for secondary systems for the South Australian Transmission grid. This includes ensuring protection and control adequacy in a network with high penetration of renewable energy resources.

Anita served as Regular Member for South Africa on SC B5 from 2016 to 2022. From 2022, she has served as the advisor for the Tutorial Advisory Group of SC B5.

### Mr. Toru Maeda

Mr. Toru Maeda is a Deputy Senior General Manager of Transmission & Distribution Systems Center at Mitsubishi Electric Corporation. He received his Master's degree from Kyoto University (JP) in 1995 and has 30 years of experience in power system protection and control. He has been engaged in the development of Remedial Action Schemes (RAS), with several systems currently in operation. Prior to his current role, he served as the General Manager of Protection & Control Systems Department until March 2025.

Mr. Maeda has also participated in technical committees of The Institute of Electrical Engineers of Japan (IEEJ) and the Electric Technology Research Association (ETRA).

### Ms. Denise Borges de Oliveira

Graduated in Electrical Engineering from the State University of Rio de Janeiro in 1981 and completed a postgraduate degree in Electrical Systems Protection from the Federal University of Rio de Janeiro in 2003. Conducted studies and performed commissioning tests on protection systems at Furnas Power Plants Inc. from 1981 to 2013. In 2014, started working at the National Operator of the Brazilian Power System - ONS, conducting studies on methodologies for protection system applications, performing analyses of protection systems during disturbances and developing protection system requirements in the Operator Grid Code. Participates as an active member of the Protection and Automation Committee (CE B5) of CIGRE Brazil and committed to advancing protection systems through active participation in technical committees and seminars. Since 2023, has been a professor in the postgraduate course in protection systems at the Military Institute of Engineering - IME, in Rio de Janeiro.

### Prof. Nirmal Nair

Dr. Nirmal Nair is a globally recognized expert in electrical engineering with academic credentials from Maharaja Sayajirao University (B.E.), Indian Institute of Science (M.E., Gold Medal), and Texas A&M University (Ph.D.). He has held research and professional roles across India, the USA, and New Zealand. A Fellow of IEEE and CIGRE Distinguished Member, he received the 2022 CIGRE SC B5 Outstanding Service Award. Dr. Nair has been a key contributor to CIGRE New Zealand since 2008, serving in multiple leadership roles. Internationally, he has contributed to several CIGRE B5 working groups, task forces, and Paris sessions as Special Reporter. He is the editor of the CIGRE Green Book on IEC 61850 and currently represents NZ in CIGRE C5. He convened TB 810 on protection in islanded systems and continues to share his expertise through tutorials, including as a contributor to the 2025 CIGRE SC B5 Osaka Colloquium.

# Group Discussion Meeting

## Date & Time

|        |               |     |
|--------|---------------|-----|
| 3 July | 14:00 – 17:30 | PS2 |
| 4 July | 9:00 – 12:30  | PS1 |
| 4 July | 13:30 – 17:00 | PS3 |

## Venue

1003

| PS  |   |
|-----|---|
| PS1 | IEC 61850 based Interoperability of IEDs of different manufacturers and technologies integrated in one PACS<br><br><u>Special Reporter</u><br>Mr. Mikko HOLMGREN<br>Fingrid Oyj |
| PS2 | PACS Life Cycle Performance and Longevity<br><br><u>Special Reporter</u><br>Mr. Kazuhiro Enomoto,<br>Kansai Electric Power Co., Inc.  |
| PS3 | Sharing of best practices on revised principles enabled by modern protection IEDs<br><br><u>Special Reporter</u><br>Ms. Maud MERLEY<br>RTE (Réseau de Transport d'Électricité)  |

**POCKETALK**

Pocketalk for  
**Conference**





# TOSHIBA



We turn on the promise of a new day  
by designing the future of energy.

**Toshiba Energy Systems & Solutions Corporation**

<https://www.global.toshiba/ww/company/energy.html>





# Energy solutions

Preparing critical infrastructure for seamless communication and operational efficiency



## Upgrade your grid

Power transmission and distribution companies are in a race to modernize telecommunication technologies and improve resiliency. Meanwhile, companies are responding to aging infrastructure, extreme weather and energy transition – not to mention increased demand from a growing population. Reliable connectivity is a must, especially for high-voltage transmission networks. Belden's digitization solutions help utilities harness the power of data to deliver secure, dependable and affordable energy, enhancing critical applications such as protection, automation and control systems, as well as teleprotection.

XTran MPLS-TP



Hirschmann Switches



GREYHOUND GRS2000



RSP35

## Unlocking success with solutions from Belden

Discover how our solutions drive your success through these insights from industry experts.



Contact us:



Email:

Akiko.Yamaguchi@belden.com



belden.com

Connect to what's possible.





TEPCO Power Grid, Inc.

**The amount of energy provided by TEPCO Power Grid to the Tokyo Metropolitan Area - the heart of Japan's economy - accounts for around one-third of the total power consumption rate for Japan. TEPCO Power Grid continually provides a stable, high quality power supply.**



**KINKEI SYSTEM CORPORATION** ~SINCE 1962~

Top-share manufacture of Digital Fault Recorder/ Fault locator in Japan

KINKEI SYSTEM CORPORATION is a leading company in Digital Fault Recorders (DFRs), and we have been contributing to Japan's stable electric power supply for over 60 years.

The DFR has evolved into a 'multifunctional measurement device' that integrates the functions of DDR (Dynamic Disturbance), PQR (Power Quality, e.g. 50th harmonic), PMU (Synchrophasor), and SER (Sequence of Event) into a single unit. In recent years, we have also developed an IEC 61850-compliant model, which has been delivered to electric power companies both in Japan and abroad.

Furthermore, by applying this technology, we developed a transmission line Fault Location system (FL), which has also been supplied to utilities worldwide.

To support the global mission of power companies—ensuring a reliable and stable electricity supply—we provide high-quality DFR and FL solutions.



Contribute to the resilience of the electric power system and the development of industry.

HEAD OFFICE : 8-2-61, NANKOHIGASHI, SUMINOE-KU, OSAKA, 559-0031 JAPAN.

C O N T A C T : Overseas Sales Dept.

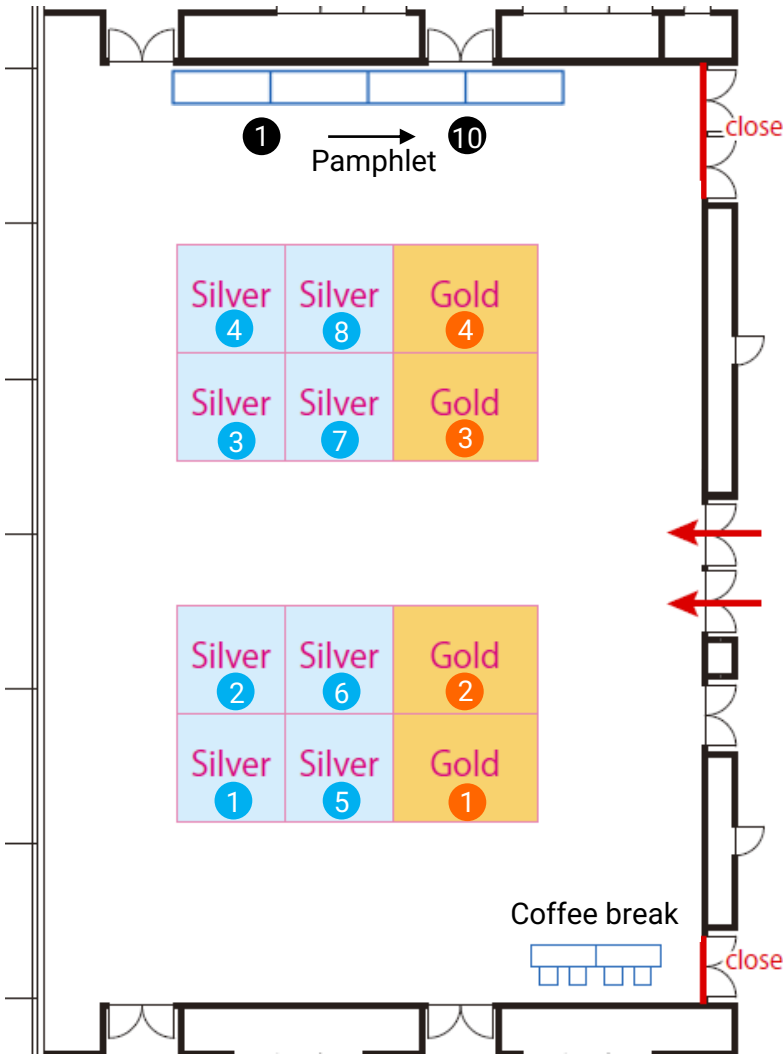
E-mail : [overseas.sales@kinkei.co.jp](mailto:overseas.sales@kinkei.co.jp)

WEB SITE : <https://www.kinkei.co.jp/en/>

## Exhibition Hall

1008 · 1009

Wednesday 2 July 13:00 – Friday 4 July 13:00



# Exhibition

## Gold Sponsors

- ① Mitsubishi Electric Corporation
- ② Toshiba Energy Systems & Solutions Corporation
- ③ Hitachi, Ltd.
- ④ Belden Inc.
- ⑨ Kansai Transmission and Distribution, Inc. (Pamphlet only)

## Silver Sponsors

- ① SIEMENS
- ② Fuji Electric Co., Ltd.
- ③ KINKEI SYSTEM CORPORATION
- ④ Globetech Inc.
- ⑤ Nokia Corporation
- ⑥ Chubu Electric Power Grid Co.,Inc.
- ⑦ WAGO Company of Japan,Ltd
- ⑧ OMICRON electronics Asia Limited
- ⑩ TEPCO Power Grid, Inc. (Pamphlet only)

## Bronze Sponsors (Pamphlet only)

- |  |  |
|--|--|
| ① Chugoku Electric Power Transmission & Distribution Company, Incorporated | ⑤ Shikoku Electric Power Transmission & Distribution Company, Incorporated |
| ② Hokuriku Electric Power Transmission & Distribution Company              | ⑥ TAKAOKA TOKO CO., LTD.   |
| ③ Kyushu Electric Power Transmission and Distribution Co.,Inc.             | ⑦ Tohoku Electric Power Network Co., Inc.                                  |
| ④ Nissin Electric Co., Ltd.  | ⑧ Hokkaido Electric Power Network, Inc.                                    |



# SHAPING THE ENERGY WORLD OF TOMORROW

The number of decentralised producers and consumers is growing rapidly. Energy generation and distribution, storage and and consumption must be intelligently networked in order to function smoothly. WAGO supports this with scalable solutions for the distribution network and charging management, and the generation and use of renewable energies.



[www.wago.com/energy](http://www.wago.com/energy)

## SIEMENS

# Substations with the **future built in**

The integrated 360° portfolio of products and solutions from Siemens covers all digitalization aspects of a substation. It enables operators to significantly increase the availability, efficiency, and sustainability of their grid.

The aspects are:

- Digitalization of the substation level
- Digitalization of the process level
- Cybersecurity
- Grid operation
- Integrated engineering
- Asset management

[siemens.com](http://siemens.com)





Welcome  
Party  
&  
Gala Dinner





# Welcome Party



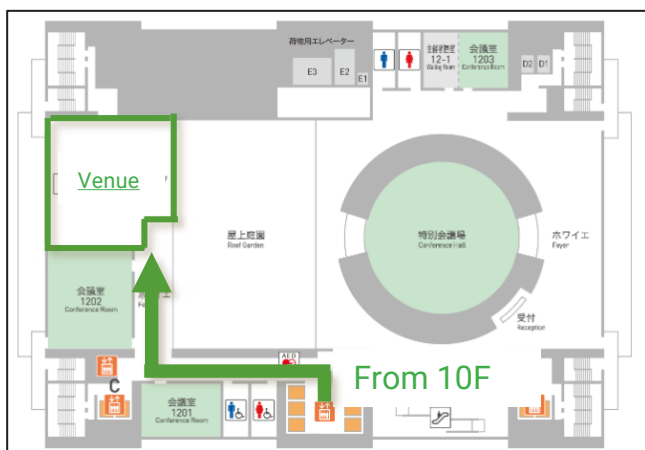
Photo Credit : GRANDE TOQUE

## Date

Tuesday 2 July , from 18:00 to 20:00 (Door open 17:45)

## Venue

*GRANDE TOQUE*



12<sub>F</sub>

- No registration fee (included in the registration fee for the colloquium)
- The party will be held buffet style.
- Kindly ensure that you bring your name badge.

# Gala Dinner



Photo Credit: RIHGA Royal Hotel

## Date

Friday 4 July , from 18:00 to 20:00 (Door open 17:30)

## Venue

*SANRAKU, Tower Wing, 2nd Floor, RIHGA  
Royal Hotel*

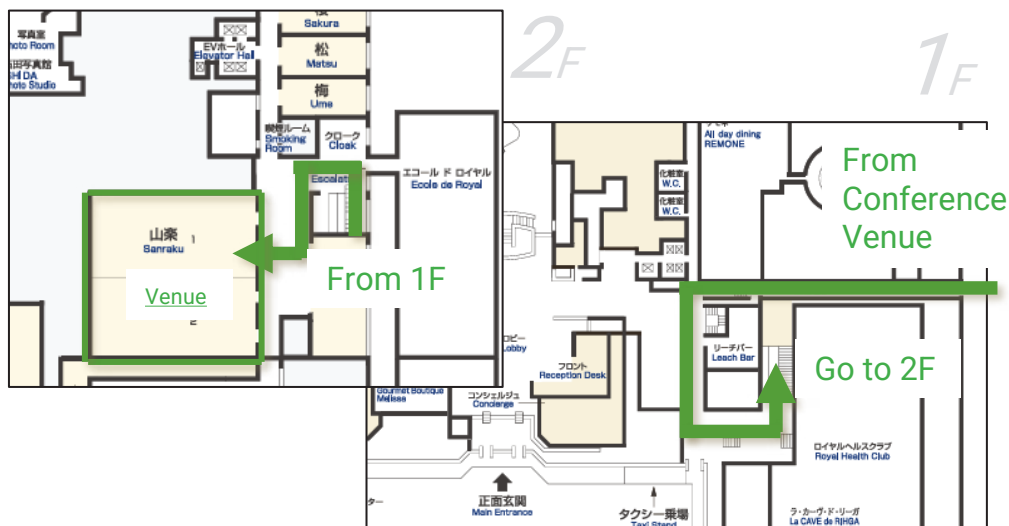


Photo Credit: RIHGA Royal Hotel

- No registration fee (included in the registration fee for the colloquium)
- Several special attractions are being prepared.
- Kindly ensure that you bring your name badge.

# Technical Tour

## Destination

EXPO 2025 Osaka, Kansai

## Tour Schedule

- Group A: Meeting at 9:00 AM, dismissal at 12:00 PM
- Group B: Meeting at 10:00 AM, dismissal at 1:00 PM
- Group C: Meeting at 11:00 AM, dismissal at 2:00 PM

## Meeting Point

In front of the East Gate Entrance of the Kansai Expo 2025.

Access: Yumeshima Station on the Osaka Metro Chūō Line.



Meeting Point

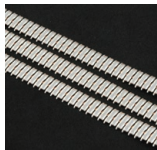
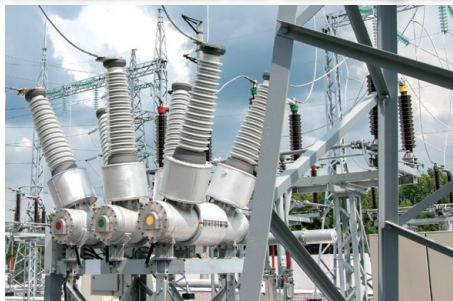
- Kindly ensure that you bring your name badge.
- Participants who arrive late for their assigned meeting time will unfortunately not be able to join another group.
- Large luggage is not permitted inside the Expo.



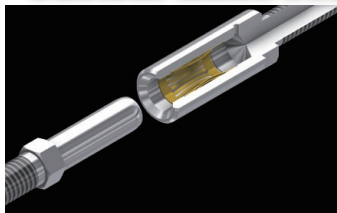
Osaka Colloquium logo as  
a landmark for gathering.

# HIGH CURRENT CONNECTORS

## Contact Band for Switchgear



## Custom-Made Connectors



Custom designed connectors based on your specifications, including capacity, shape, materials and environments.

Available in a range of current capacity **100A, 1000A, up to 5,000 A**

### Features

- Low contact resistance
- Stable energization enabled with multi-point contact bands.
- Longer operation life

 GLOBETECH

<http://www.globetech.jp/>

# NOKIA

## Harness the power of IP/MPLS for power grid communications

Download the ebook







omicon.energy/  
new-cmc

## 次のステージへ

Take your game to the next level

進化する試験に、先手を打つ。最新の課題に対応するIEC 61850の保護試験システムで、電力試験の未来をリード。CMC 500は、多機能・モジュール設計によるマルチフェーズ対応の保護リレー試験機及び変電所試運転ツール。あらゆる試験を、よりスマートに、柔軟に。

Stay ahead with our IEC 61850 protection test sets, designed for today's challenges. Revolutionize testing with the **CMC 500**, a versatile, modular, multi-phase protection relay test set and substation commissioning tool.

OMICRON



## Bronze Sponsors



Chugoku Electric Power Transmission & Distribution Co., Inc.



YONDEN T&D



Hokuriku Electric Power  
Transmission & Distribution Company



株式会社 東光高岳  
TAKAOKA TOKO CO., LTD.



Kyushu Electric Power  
Transmission & Distribution



Tohoku Electric Power Network Co., Inc.



NISSIN ELECTRIC CO., LTD.



Hokkaido Electric Power  
Network, Incorporated





**CIGRE SC B5 2025**